



Koch ICF

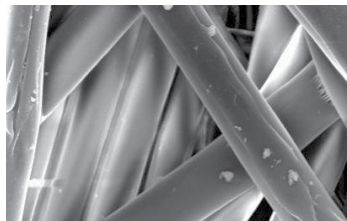
Industrial Cartridge Filters For Gas Turbines and Environmental Dust Collection

Koch Filter has replacement cartridges for all types of gas turbine barrier systems and dust collector systems. All filters are constructed to strict specifications and are available in multiple sizes and media configurations to meet a variety of application and environmental requirements.

High Performance Media Options:

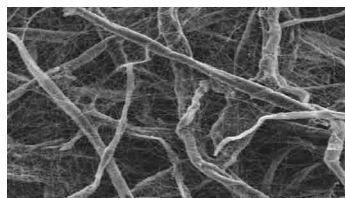
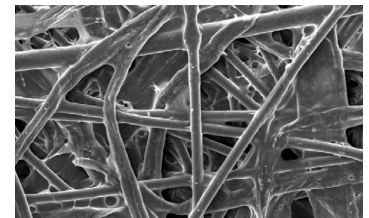
Features

- High efficiency
MERV 11-15 media
- High moisture resistance
- Multiple media options for
different environments
- Durable construction
- Replaces OEM
manufactured filters
- Multiple core and end cap options
- Uniform pleat spacing



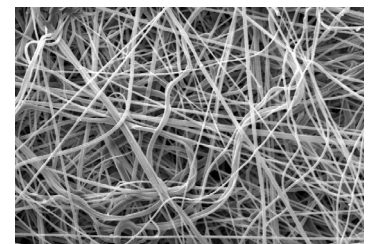
ICF-11HF Media is a High Flow 100% synthetic spun bond media with excellent moisture resistance particulate release and high strength and durability. A MERV 11 performance rating makes this media ideal for use in pulse systems.

ICF-12 Media is a high efficiency paper based media with excellent capacity, cake release characteristics, superior media strength and moisture resistance. A MERV 12 performance rating makes this media ideal for use in pulse systems.



ICF-14 Media is a blended paper media with nano-fibers to increase surface loading efficiency and cleaning performance. A MERV 14 performance rating makes this media ideal in applications where high efficiency is desired.

ICF-15 Media is a high efficiency nano-fiber blend paper based media with excellent strength and particulate release properties. A MERV 15 performance rating makes this media an ideal choice for applications where high filter efficiency is a must.



Koch ICF Technical Data

	ICF-11HF	ICF-12	ICF-14	ICF-15
Media Type	Lightweight High Flow Spun Bond Polyester	Blended Cellulose and Synthetic Fiber Paper	Blended Paper with Nano-Fibers	Blended Paper with a layer of High Efficiency Nano-fiber
MERV (Minimum Efficiency Reporting Value)	11	12	14	15
General Description/ Primary Features and Benefits	High Flow 100% synthetic spun bond media with excellent moisture resistance particulate release and high strength and durability. Ideal for use in pulse systems.	High Efficiency paper based media with excellent capacity, cake release characteristics, superior media strength and moisture resistance. Ideal for use in pulse systems.	Blended Paper with a Nano-Fiber efficiency layer on one side. Excellent capacity and high airflow leads to decreased energy costs. A MERV 14 performance rating makes this media an ideal choice for applications where high filter efficiency is desired.	High Efficiency melt blown paper based media with excellent strength and particulate release properties. Ideal choice for applications where high filter efficiency is a must.
Typical Applications	Gas Turbine Inlet, Paper Dust, Mineral Processing, Dry Chemical Processing, Powder Coating, Fiberglass, Weld Smoke Fumes, Shot Blasting	Gas Turbine Inlet, Pharmaceutical, Battery Recycling, Mining, Dry Chemical Processing, Powder Coating, Abrasive Shot Blasting	Gas Turbine Inlet Filters, Mining, Battery Recycling, Powder Coating, Pharmaceutical, Dry Chemical Processing	Gas Turbine Inlet, Grain Dust, Paper Dust, Polishing, Textiles, Tobacco, Wood Working

Other specialized medias are available: fire retardant treatment, metalized treatment and other options for a variety of specialized applications. Multiple prefilter options are available including cartridge prefilter media wraps. Please contact factory for more information.

Regional Sales Offices/Distribution Centers

Atlanta, GA • Detroit, MI • East Greenville, PA* • Houston, TX*
Indianapolis, IN • Kansas City, MO • Louisville, KY* • Madbury, NH
Miami, FL • Nashville, TN • Mira Loma, CA* • Tacoma, WA

*Denotes manufacturing site.

© March 2016 KOCH FILTER CORPORATION



KOCHFILTER[®]

8401 Air Commerce Drive Louisville, KY 40219
Phone: 502.634.4796 | Fax: 502.637.2280
info@kochfilter.com | www.kochfilter.com